



ID Plates | Application and Design

Safety – Asset Tracking – Equipment ID - Branding



ID PLATES = COMMUNICATION

ID plates communicate vital information for equipment installed both indoors and outdoors, in harsh environments, near heat, water, chemicals, or other caustic materials.

No matter the type of environment, durability and readability of the plate is a must so that there is confidence in it lasting throughout the equipment lifespan.

This eBook explores common applications for ID plates and options for effective design elements.

ID PLATE APPLICATIONS

Data plates and tags communicate essential information to operators, installers, and equipment users. Where and how an ID plate is used drives what type of information to include on it. There are four common uses for ID plates. Choose one or a combination of these to help guide your design.



**Safety
Information**



**Asset
Tracking**



**Equipment
Identification**



Branding

SAFETY INFORMATION

Informational symbols, text and colors are regulated through globally recognized standards set by OSHA, ANSI, and other organizations. Clear translation of these standards on safety labels is important, and so is taking time to incorporate specific information or operational instructions that relate to your equipment.

Generators, punch presses, pumps and conveyors are examples of industrial equipment displaying critical safety and operational information.



ASSET TRACKING

ID plates are useful in asset tracking of equipment to support maintenance management, purchase and requisition, audit and physical verification, and scanning of assets.



EQUIPMENT IDENTIFICATION

ID plates display the specs important for safe equipment installation, operation, and preventative maintenance.

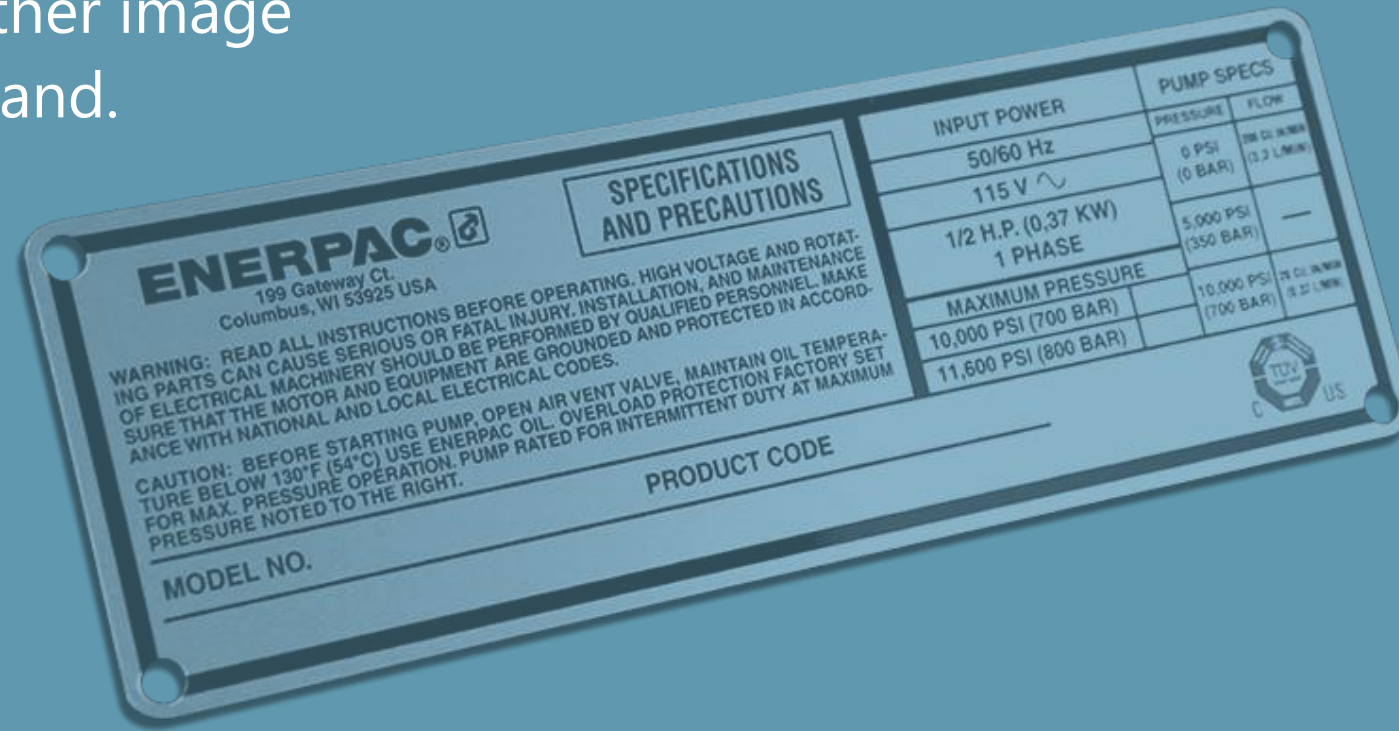
Types of Information Include:

- Manufacturer Name
- Model Number
- Serial Number
- Certifications
- Min/Max Values



BRANDING

ID plates can be customized with graphics including company logo or any other image that effectively represents your brand.



ID PLATE DESIGN

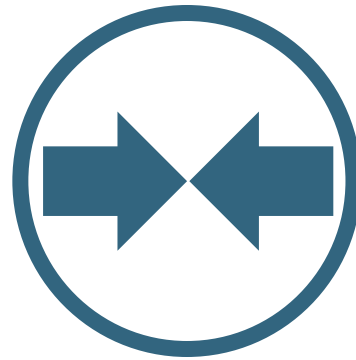
Effective ID plate design starts with understanding the application and deciding what type of information to include. The next step is considering the need for durability based on the end use. Important considerations are permanence of graphics, durability of the tag, and options in materials.



Durable Graphics



Longevity



Secure Attachment



Materials

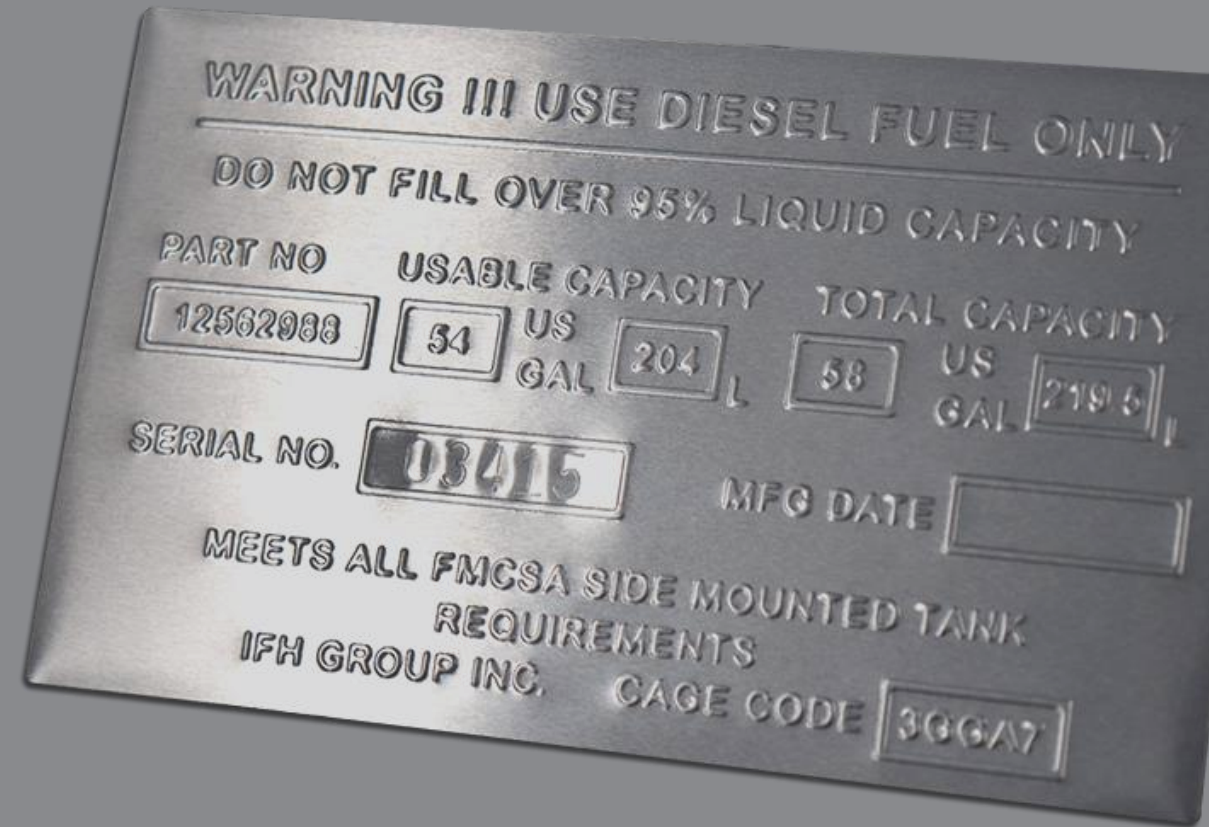
DURABLE GRAPHICS

ID Plates have strict regulations for the type of information that should be featured, set by OSHA, NFPA, and other organizations. This information needs to be legible, durably marked, and plainly visible after the equipment is installed and for many years to follow.



EMBOSSED GRAPHICS

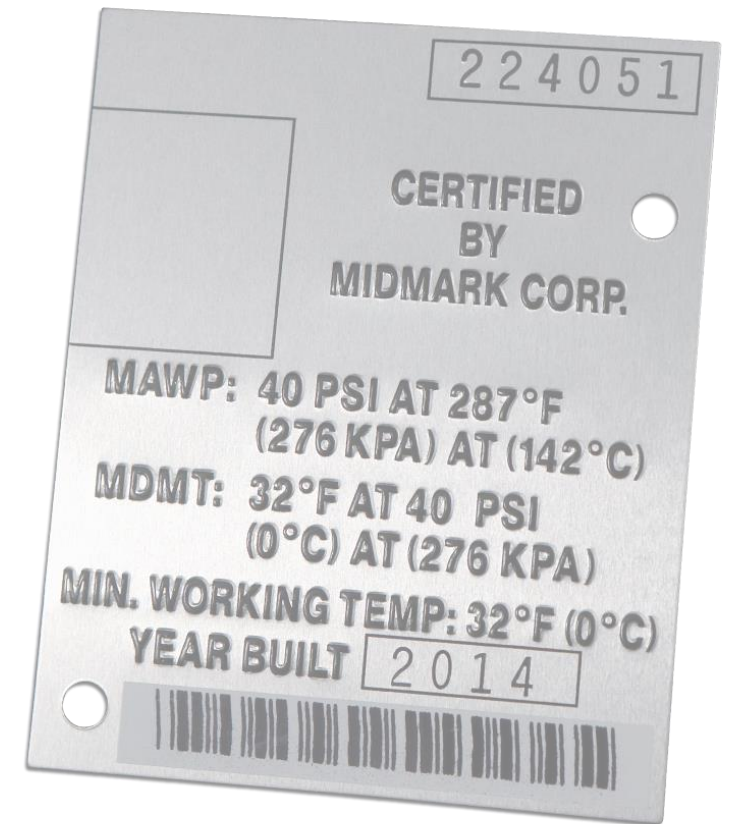
Embossing is an option for dimension and permanent graphics. The raised areas stand up in damaging environments, ensuring essential information is displayed even after many years of use.



STATIC AND VARIABLE DATA

Markings for data plates and asset tags are customizable with static or variable fields. This data can be configured to be filled in during production or left blank to allow you to stamp, laser, or engrave on your end.

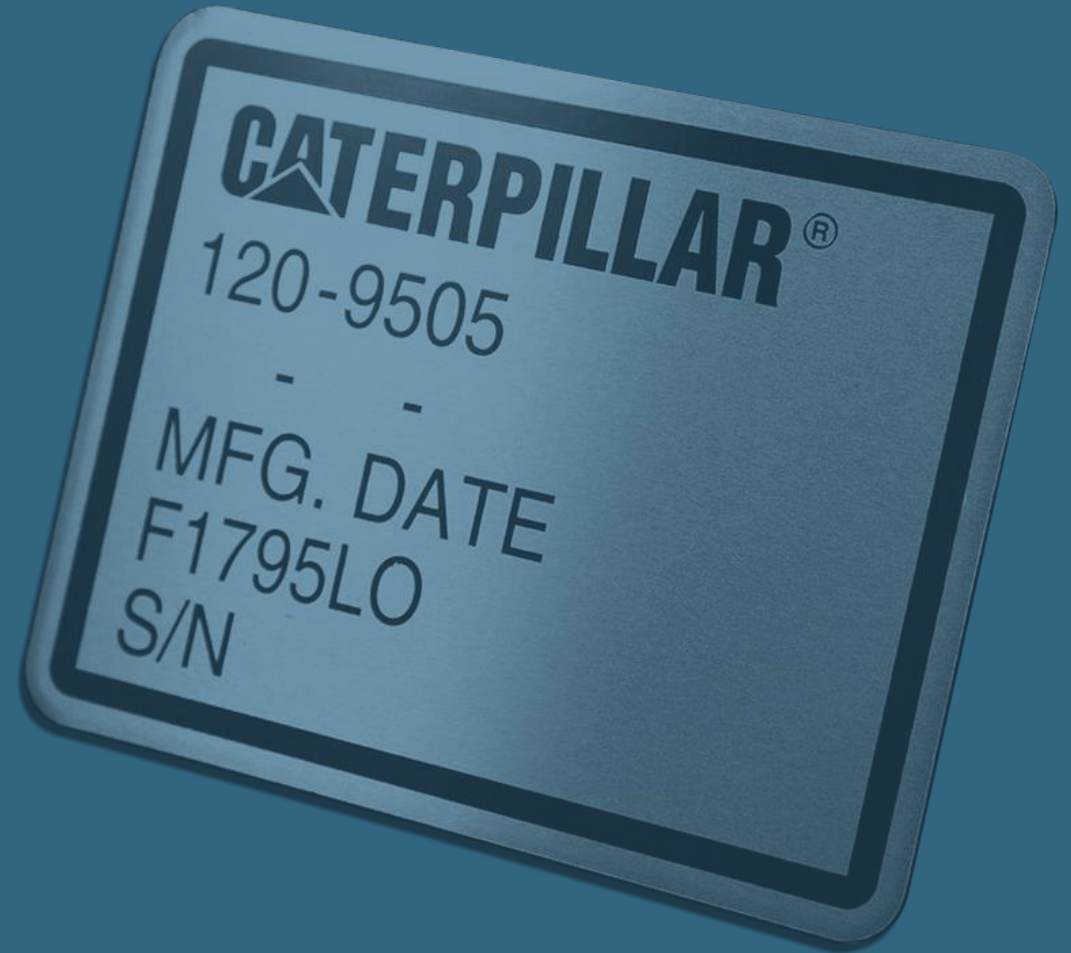
Sequential numbering, bar codes, voltage, and temperature ratings are examples of the type of data that can be customized.



LONGEVITY

Anodizing, protective topcoats, and high temperature inks are some durable solutions. Each stands up to indoor and outdoor environments, ensuring ID plates last the lifetime of equipment.

All processes follow strict compliance guidelines to ensure quality and industry standards are met.



SECURE ATTACHMENT

Metal ID plates use mounting holes to attach to equipment with rivets or screws. Sometimes a pressure sensitive adhesive is adequate, or it is combined with mounting holes. The environment and application will help determine a solution.

Industrial labels made using plastic substrates are supplied with pressure sensitive adhesive. These labels can be supplied as individual parts, in strips, or kits to facilitate assembly operations.



FORMING

Aluminum and stainless steel ID plates can be formed to wrap around equipment, pipes, or valves. This ensures the information plate is permanently attached to the contoured surface.



INDUSTRIAL DATA PLATE MATERIALS

Choosing the material for these applications means taking into consideration the end application and expected performance requirements. A wide variety of materials are available on both metal and flexible substrates.

DURABLE METAL PLATES

Metal nameplates are ideal for equipment installed in harsher environments, near heat, or those exposed to vibration and grease such as metal valve plates or pump tags in boiler rooms.

Aluminum and stainless steel are metals of choice for data plates due to their robust qualities in both mild and harsh environments.



FLEXIBLE LABEL OPTIONS

Industrial labels made from flexible material are ideal for applications that need to showcase serial or model numbers, electrical rating specs, load rating or date of manufacture on a variety of equipment.

Aluminum foil, polycarbonate, polyester, and vinyl are lightweight materials that do not tear and naturally conform to curved surfaces.





EFFECTIVE COMMUNICATION

ID plates communicate information for safe equipment operation, scheduled maintenance, and companies needing to identify or track their assets. Effective ID plates utilize clean, simple, and easy to read designs.

McLoone offers a diverse selection of material, processes and durable solutions that last the life of your equipment.

[GET A QUOTE](#)

RELATED RESOURCES

Check out these articles and eBooks for even more helpful information about durable solutions for nameplates, overlays, and labels.

Articles

- 6 Tips to Simplify ID Plates
- 5 Reasons Metal is Material of Choice for ID Plates
- Style Options for Metal Blanks and Tags

eBooks

- Effective Design for Equipment Tags
- Metal Nameplates That Stand Out – Embossing on Metal
- 5 Building Blocks for Metal Nameplate Design



ABOUT MCLOONE

At McLoone, we combine creativity and expertise to custom manufacture graphic solutions that help you professionally brand your product. Whether building to print, creating rapid prototypes or collaborating on a custom solution, we're known for meeting deadlines and exceeding expectations.

Quality is integrated into every area at McLoone, from prototyping through delivery. We are ISO 9001:2015 registered and comply with RoHS3 and REACH requirements.

65 YEARS STRONG AND GROWING

Submit your requirements for pricing and see how McLoone can help create an effective ID plate to communicate your critical information.

GET A QUOTE

info@mcloone.com

